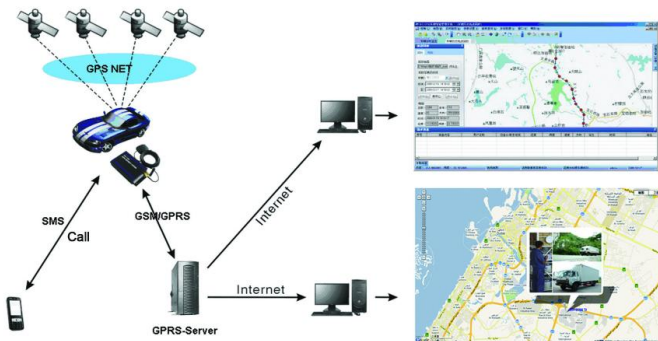


# **GPS Camera Tracker Instructions**

# 1 GPS Tracking System Introduction

GPS Camera Tracker integrates GPS and GSM functions, which could send vehicle location and status to mobile and Internet. It can track the vehicles remotely and transmit image of the vehicle to Internet through camera. The system structure is as below:



# 2 Product Description



## 2.1 Specification

### GSM module:

- Band:850/900/1800/1900MHz
- Max RF Output: 33.0dBm±2dBm
- Dynamic Input Range: -15 ~ -102dBm

### GPS module:

- GPS chip set: SiRF Star III
- Frequency: L1, 1575.42 MHz
- Number of Channel: 20

### Interface:

- 1 Camera interface
- 1 extend R232 port
- 1 A/D Port
- general I/O Ports
- 1 Microphone interface

### Battery:

- Voltage:3.7V
- Charge:<4.2V
- Li-ion: 200~850mAh

**Input Voltage:** DC 9~36V

**Operating Temperature:**-45~65 ℃

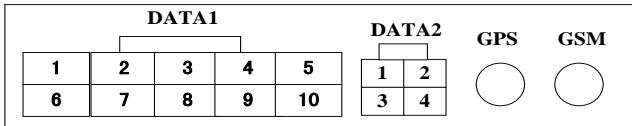
## 2.2 Features:

1. Use Google map, Global free

2. Take photo of the vehicle, and Image transmit to internet.
3. Fuel Check / monitor
4. Real-time locating / inquiry
5. SOS button/Power-cut Alarm
6. Listen by telephone
7. E-fence/Over-speed Alarm
8. Compatible original anti-theft
9. Remote control engine

### 3 Installation Instructions

#### 3.1 Interface

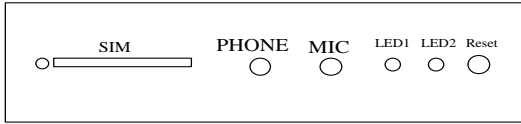


#### DATA1

No.	Description	No.	Description
1	DC+ (9~36V)	6	GND
2	Fuel check line	7	SOS button
3	GND	8	Extend port1(Assist alarm)
4	ACC	9	Extend port2
5	Engine cut_off control	10	Extend port3

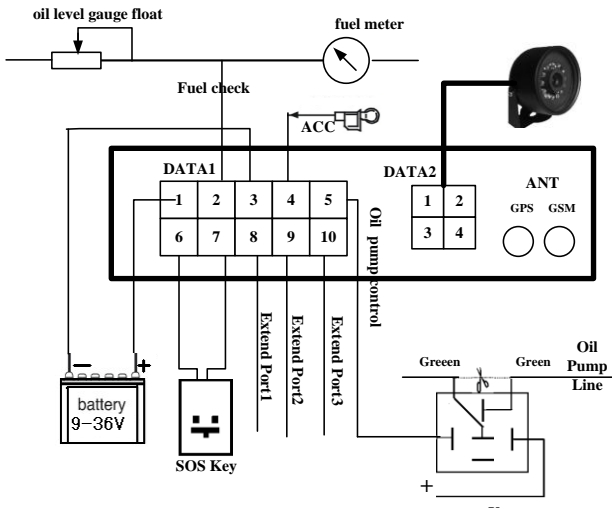
#### DATA2:

Camera port



- 1、SIM: Port for SIM card
- 2、PHONE: Connect to Microphone
- 3、MIC: Connect to earphone
- 4、LED1: Power light
- 5、LED2: Status light
- 6、Reset

### 3.2 Installation Figure



### 3.3 Installation and Test:

Please test after installation. If you don't need some functions, you can disconnect corresponding interface. Please make sure ACC, DC, GND installed correctly. Otherwise, the device cannot work. Please check the device status through signal light after power on:

- LED1 is off which indicates there is no power.
- LED2 flashes for one second which indicates GSM registers successfully.
- LED2 flashes three seconds once which indicates GPS is obtaining orientation
- LED2 is on which indicates work successfully that GSM has registered and GPS has obtained the orientation.
- If LED 2 is on 0.1 second then off 0.1 second for more than 3 minutes, please make sure SIM card inserts well. Without SIM card, the device cannot work.

## 4 SMS Operation Instruction

SMS Format: A\*\*\*\*\*,cmd,param1,param2...

1. \*\*\*\*\*is the password, Initial Password is 000000
2. cmd is the command ID.
3. Param is the command parameter. Different cmd use different parameters. All the parameters must use half-angle symbol. Wrong SMS format or wrong password, it will not respond.

### 4.1 Location Enquiry (000)

Message format: A\*\*\*\*\*,000

e.g. **A000000,000**

**Reply: Longitude E113.93923 Latitude N22.54079 08-10-20 17:38:30,**  
**User could enquiry in [HTTP://maps.google.com](http://maps.google.com).**



## 4.2 Change Password (001)

Message format: A\*\*\*\*\*,001,New Password

e.g. A000000,001,123456

Note:000000 is the old password ,123456 is the new password.

Reply: **Set Password OK!**

## 4.3 Real-time return setting (002)

Message format: A\*\*\*\*\*,002,XXX

XXX=0 is for STOP, value of XXX is within [15~64800] seconds.

e.g. A000000,002,30

Message replied after successful setting: **Set time interval (30)**  
**OK!**Message contains position information will be sent in every 30 seconds  
 after successful setting.

## 4.4 Alarm/Listen Number setting

Message format: A\*\*\*\*\*,003,P,TelNumber

P=1 is for SOS and listen

P=2 or 3 is the second\ the third listen number.

e.g. **A000000,003,1,136xxxxxxx**

Message replied after successful setting: Set Telephone OK!

Keep pressing SOS button for 2 seconds. The device will send emergency SMS and dial the number you set as SOS number.

Reply: SOS Pos: Longitude E114.04577 Latitude N22.32405 08-10-20 17:38:30,

If you dial with your listen number, it can be connected automatically after the 7<sup>th</sup> ring. Then you can listen the voice in the vehicle.

## 4.5 Over-speed Alarm Setting (005)

Message format: A\*\*\*\*\*,005,XXX

XXX=[000,200] (unit: km/h)XXX=00 is close the function.

e.g. **A000000,005,020**

Message replied after successful setting: **Set Over speed (20) KM OK!**

If the vehicle is over speed you set, it will send alarm SMS to SOS mobile number. 20 KM/H Over speed!

## 4.6 e-Fence Setting(006)

Message format: A\*\*\*\*\*,006,XX

XX =[00-50] (Unit:100m) .

When XX=0, e-Fence is OFF. And the maximum limited value of XX is



50\*100=5000m. e.g. **A000000,006,10**

Reply: **Set Distance (1000)M OK!**When user is out of the bound region (e.g. 1020m), a prompt message will be sent to the user: **1020m is further than 1000m!**

#### **4.7 Engine Cut-off Setting (007)**

Message format: A\*\*\*\*\*,007,X

X=0 cut off engine , x=1 resume engine, For security, this command will execute when the speed less than 20Km / h or the ACC is off .

e.g. A000000,007,0

#### **4.8 Fuel data collect (017)**

Message format: A\*\*\*\*\*, 017, XX

Note: XX =[0 , 100], which corresponds to fuel percentage. For example: if the fuel meter shows 50% fuel, (A000000,017,50),and the device checking value is 170, it will reply: Oil interval (50:170)!You can view fuel line in GPS Vehicles Tracking system.

#### **4.9 Open/Close camera function (019)**

Message format: A\*\*\*\*\*,019,X

X=0 close camera function, x=1 open camera function

e.g. A000000,019,0

## 5 GPRS Communication Settings

### 5.1 Set APN (APN(Access Point NAME))

Message format: **A\*\*\*\*\* ,012,APN**

Length of APN is limited within 100 characters, E.g:**A000000,012,cmnet**  
“cmnet”is the APN of China Mobile

### 5.2 Set the IP and Port of Gprs\_Server

Message format: **A\*\*\*\*\* ,010,IP,PORT**

e.g. **A000000,010,121.37.58.10,6903**

121.37.58.10 is the IP of GPRS\_server, 6903 is the port of GPRS\_Server application (be in communication with GPS camera tracker)

### 5.3 Open GPRS function

Message format: **A\*\*\*\*\* ,011,X**

(note:**x=1 open GPRS, X=0 close GPRS**)

e.g. **A000000,011,1**

GPRS function will be open, and GPS Camera tracker will send data to Internet,Users can turn off this function though send SMS: **A000000,011,0**

### 5.4 Query the GPRS Setting

Message format: **A\*\*\*\*\* ,004**

The device will send back GPRS setting parameters. You can check whether the parameter sets correctly by it.

NR09G00001,CMNET,121.37.58.10,6903,1,1,24

- (1) Device ID
- (2) APN (China Mobile is CMNET, China Unicom is UNINET)
- (3) Server IP address
- (4) Server port
- (5) GPRS open status (0- off , 1- on)
- (6) GPRS connecting status (0- Internet is bad, 1- work well)
- (7) GSM signal value (1~31), if value<10 is too weak to work well.

## 6 GPS tracking system on website

### 6.1 User Login

Google Map can support many different languages. It can change language for local language by itself.

User Login

中文 English

User Name: demo@163.com

Password: .....

Verify Code: F6VPF

Experience-->UserName: demo@163.com Password: 123456

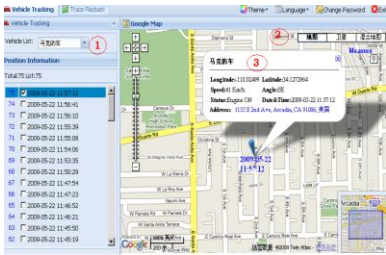
Login

## 6.2 Vehicle real-time tracking

1 choose vehicle → 2 map mode → 3.vehicle state, Google map have 3 model: map mode ,satellitic mode and Hybrid mode

Map mode

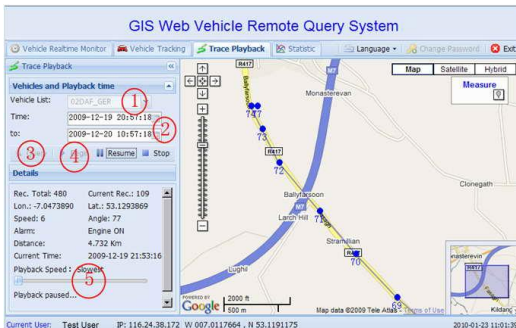
satellites mode:



## 6.3 Vehicle history record playback

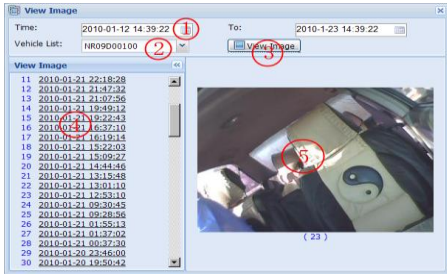
Please point run history review page

1 choose vehicle → 2 start time → 3 inquire time → 4.setup review speed → 5 start review process you can know that time date , speed , way and distance sum.

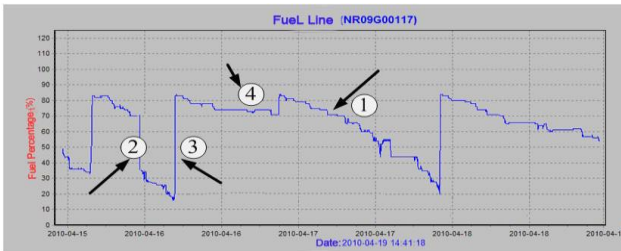


## 6.4 View image

1 Select date range → 2 Select Vehicle → 3 View Image → 4 Click the time link to display image → 5 Image



## 6.5 Fuel Line



Shows as above:

- 1 It shows normal fuel consumption. The fuel decreases slowly.
- 2 It shows abnormal fuel consumption, and it decreases straightly. It may be fuel leak or fuel stolen.
- 3 It shows the fuel increases straightly. It should be in fuel up.
- 4 It shows the fuel without change. It should be in parking.